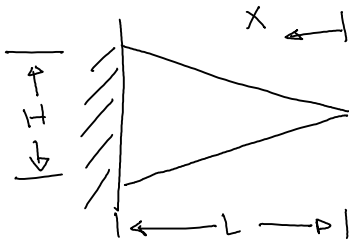


Cantilever Tapered Beam

Friday, March 07, 2008
10:47 AM



First Fundamental Frequency

$$\omega_1 = 2.6575 \frac{H}{L^2} \sqrt{\frac{E}{3\rho}}$$

where

E = Young's modulus

ρ = material density

source:

Dynamics of Vibrations

Enrico Volterra
E. C. Zachmanoglou
1965