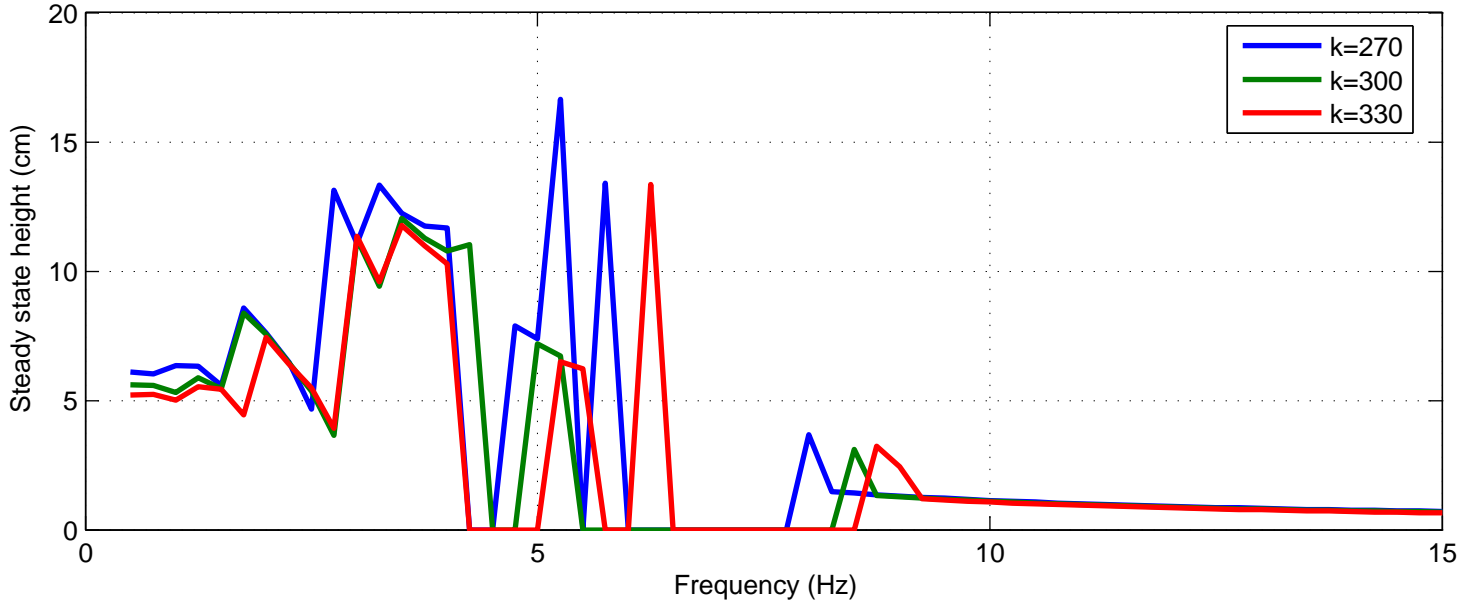


Steady State Hopping Height vs. Frequency
 $m_1=0.300, m_2=0.001, k=\text{variable } b=3.00, F=10.0, \text{duty}=35\%$



Periodicity vs. Frequency
 $m_1=0.300, m_2=0.001, k=\text{variable } b=3.00, F=10.0, \text{duty}=35\%$

